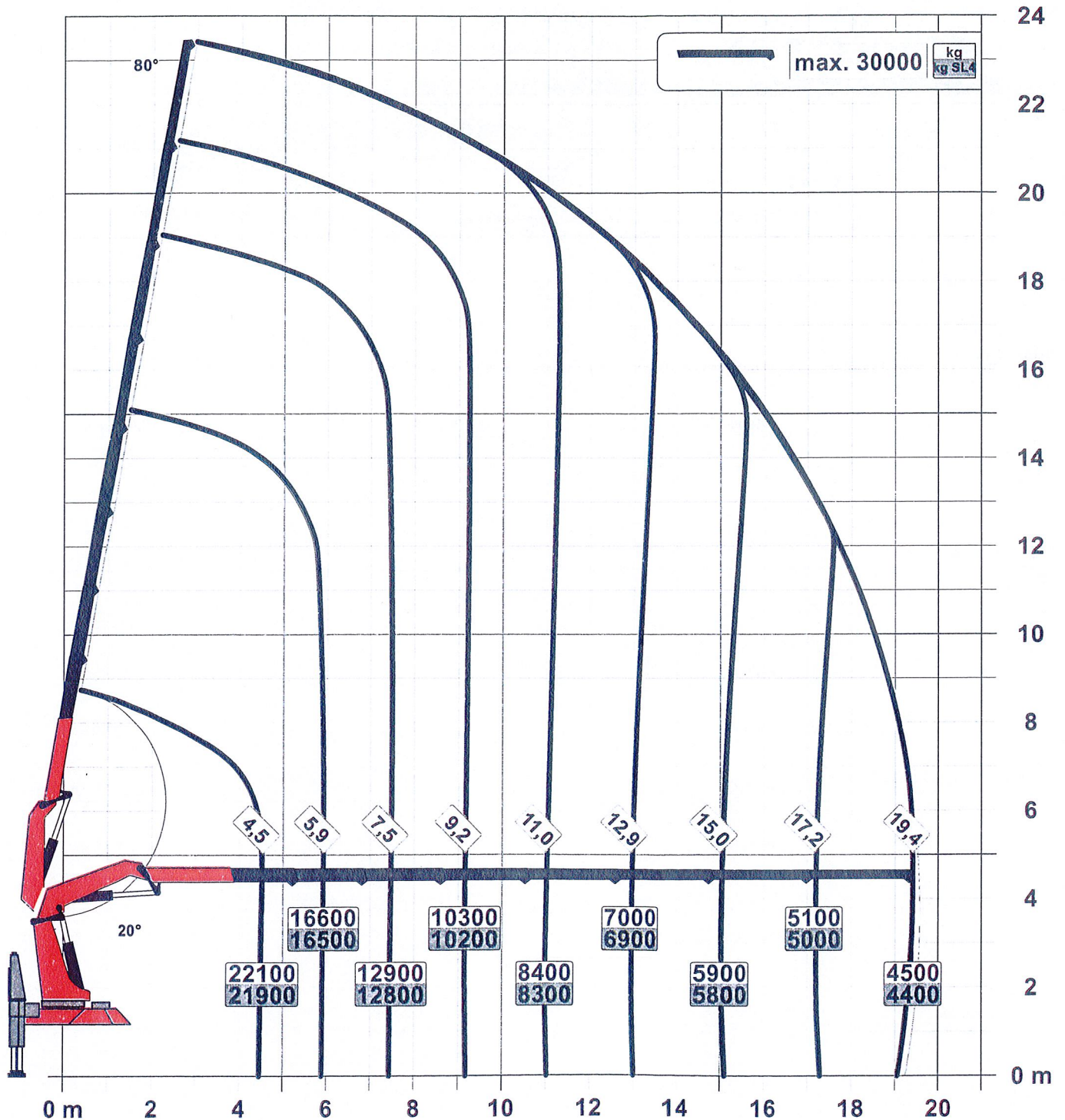


Lifting capacity diagram PK 135.002 TEC G

Subject to change, production tolerances have to be taken into account.

Symbolic crane figure



For Rope winch load capacity refer to page

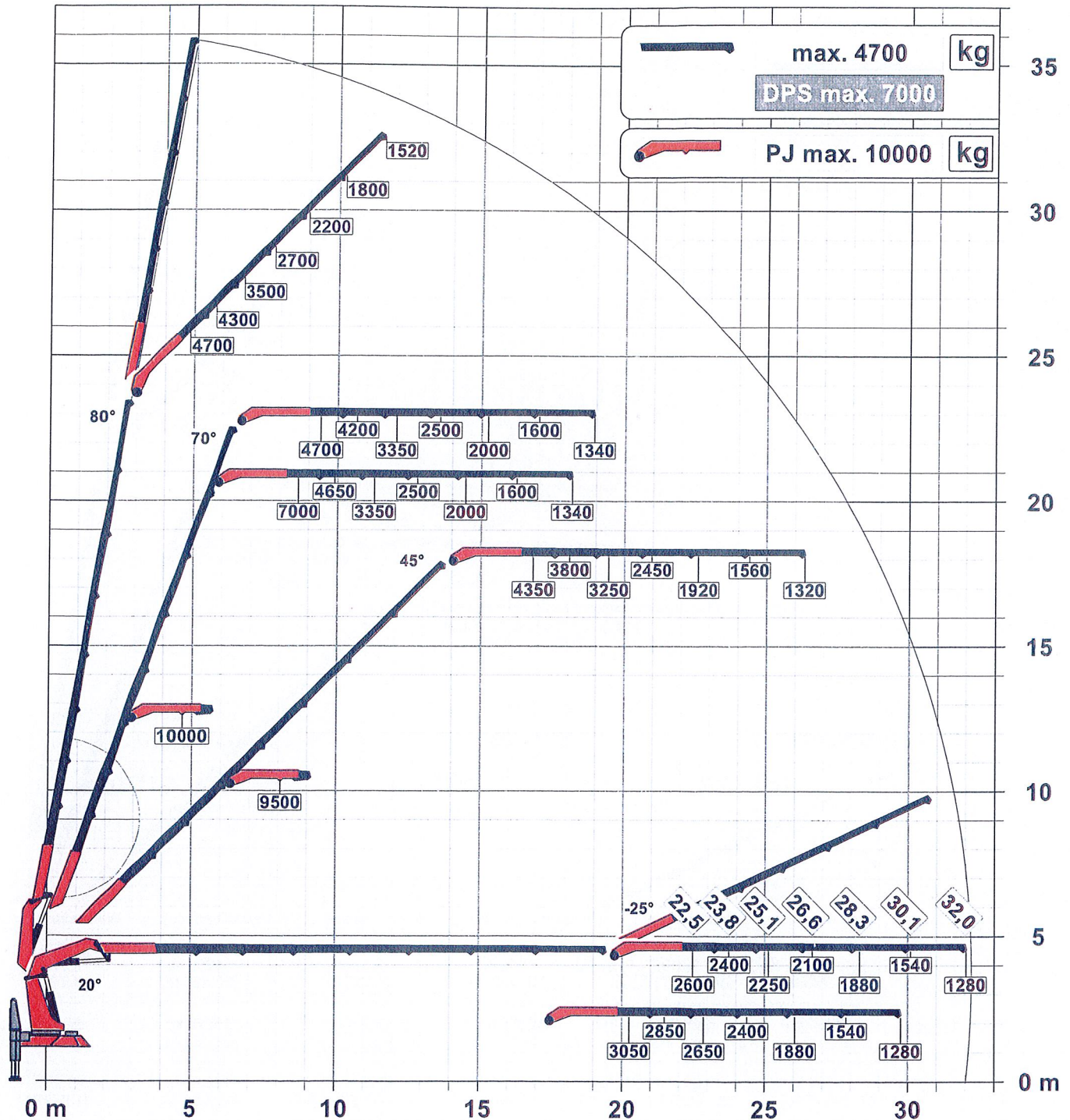
Page 020.21000 3.5t

Subject to change, production tolerances have to be taken into account.

Symbolic crane figure

DPS-C

Dual Power System



The load capacities as per chart are not reached when using hose equipment on the Fly-Jib.



For Rope winch load capacity refer to page

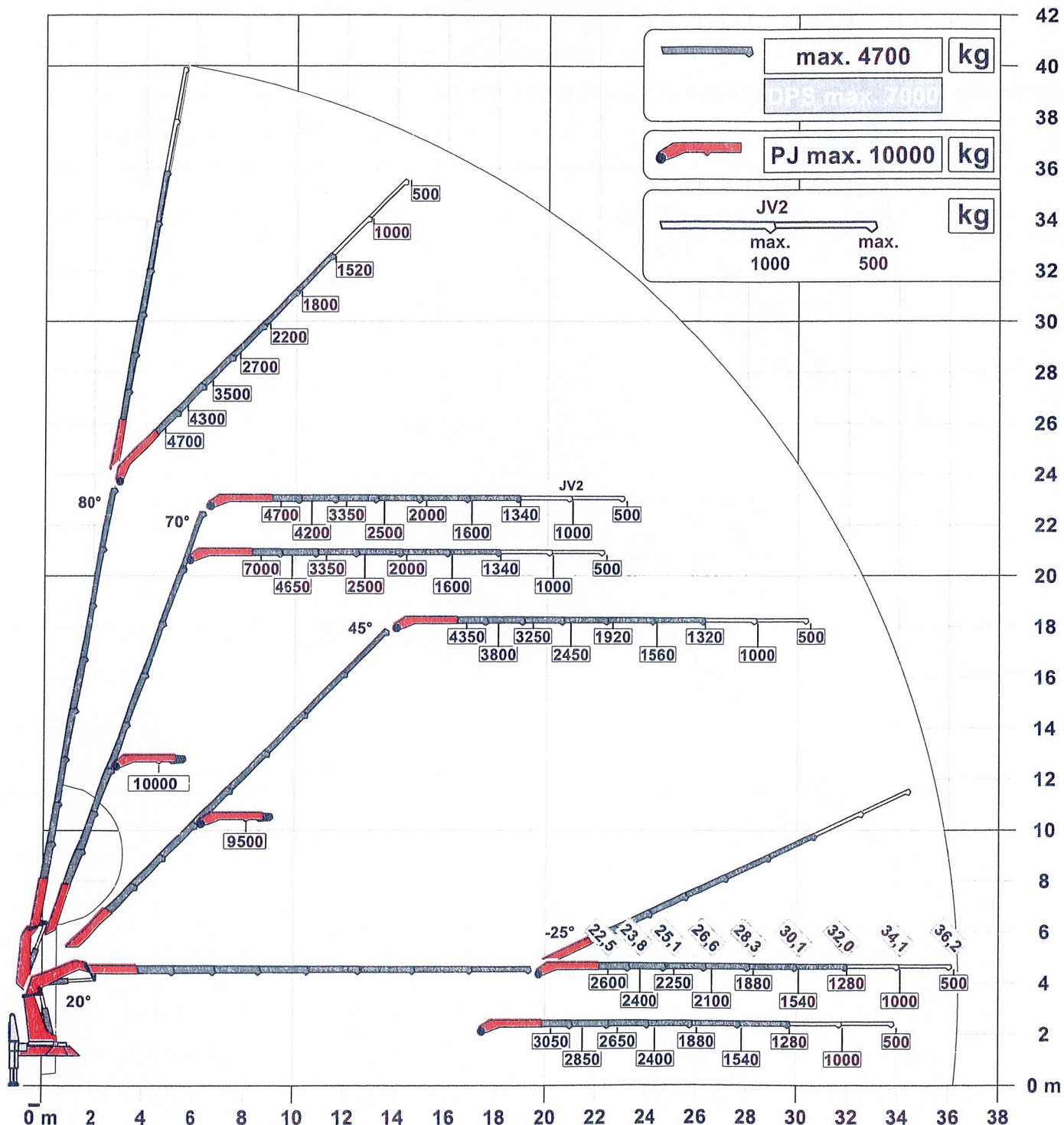
Page 020.21000 3.5t

Subject to change, production tolerances have to be taken into account.

Symbolic crane figure

DPS-C

Dual Power System



Dead weight: JV2
75kg

Kaksi mekaanista jatketta jibissä

When using mechanical boom extensions, the loads shown on the charts need to be reduced by the weight of these extensions. The load capacities as per chart are not reached when using hose equipment on the Fly-Jib.

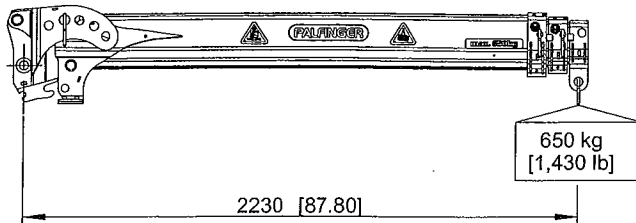


For Rope winch load capacity refer to page

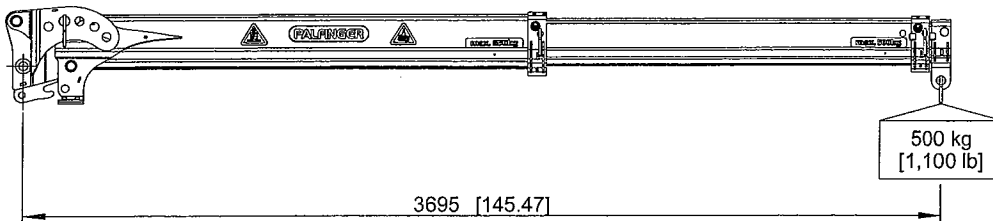
Page 020.21000 3.5t

Subject to change, production tolerances have to be taken into account.

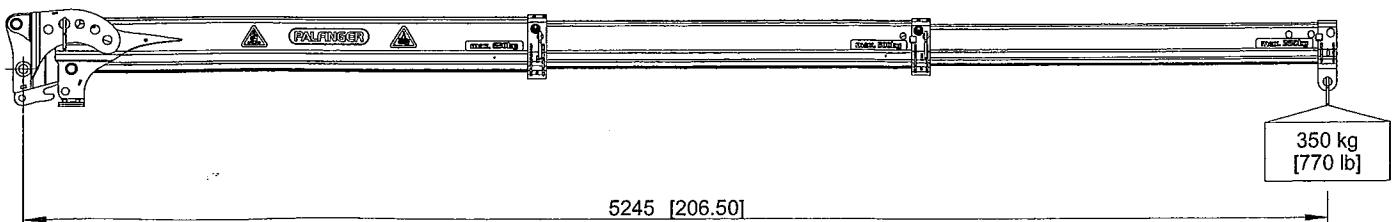
Lisäjiä: kulma säädettävissä



$$32\text{m} + 2,23\text{m} = 34,23\text{m}$$



$$32\text{m} + 3,7\text{m} = 35,7\text{m}$$



$$32\text{m} + 5,25\text{m} = 37,25\text{m}$$